

# KAPTIV<sup>®</sup>-MD

## Electronic zero air loss condensate drain

### PRODUCT FEATURES

The KAPTIV-MD is a zero air loss drain designed for smaller compressed air applications.

The KAPTIV-MD incorporates the reliable JORC direct acting valve assembly with FPM seals, offering a pressure range of 0 to 16 bar (up to 230 PSI).

The solid and robust aluminium housing design of the KAPTIV-CS has also been incorporated in to this model.

With an inlet connection height of only 74 mm this is an incredibly compact solution with unrivaled installation versatility and reliability. The weight of the KAPTIV-MD is 0.5 kgs.!

The maximum compressor capacity of this drain is 10m<sup>3</sup>/min (350 CFM) and typical draining applications include fridge dryers and filters - mainly due to its incredible compact size.



**Mini Drain!**

### COMMERCIAL BENEFITS

- Extremely compact and lightweight unit.
- True zero air-loss solution.
- One Model covers all compressor capacities up to 10 m<sup>3</sup>/min.
- No sizing chart required, offering stocking advantages.
- The serviceable valve offers maintenance opportunities.
- Personal branding opportunities.

### TECHNICAL ADVANTAGES

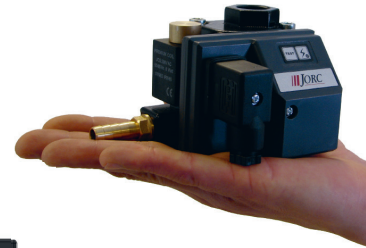
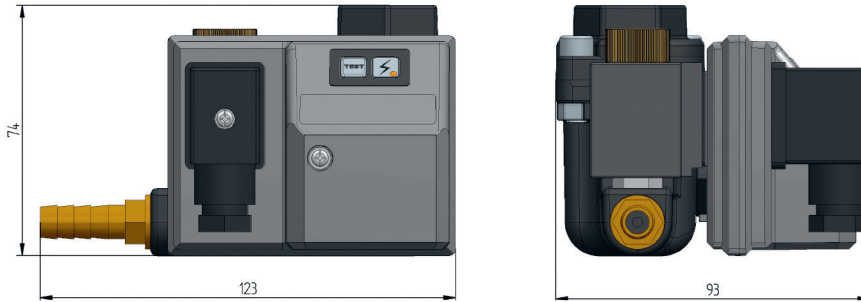
- Zero air-loss during the condensate discharge.
- Easy to install due to its low inlet height.
- External valve position allows for fast and easy maintenance.
- Direct acting valve with FPM (Viton) seal.
- Robust corrosion resistant aluminium housing.
- A large integrated mesh strainer.
- Incorporating a smart-self-cleaning valve modus.

**Remove unreliable (diaphragm operated) drains and replace them with a reliable and professional solution – the KAPTIV-MD.**

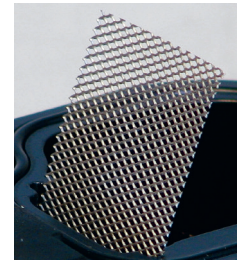
# KAPTIV<sup>®</sup>-MD

Electronic zero air loss condensate drain

## DIMENSIONS (MM)



Incredibly compact!



Integrated mesh filter

## SPECIFICATIONS

|  |                                  |
|--|----------------------------------|
| Maximum compressor capacity                                | 10 m <sup>3</sup> /min.          |
| Min./max. system pressure                                  | 0 bar / 16 bar                   |
| Valve type   | 2/2 way, direct acting           |
| Valve orifice  | 2.0 mm                           |
| Valve seals  | FPM                              |
| Inlet connection   | 1/2" (BSP or NPT)                |
| Outlet connection  | 1/4" (BSP or NPT)                |
| Inlet height   | 7.4 cm                           |
| Minimum medium temperature                                 | 1° C                             |
| Maximum medium temperature                                 | 50° C                            |
| Supply voltage options                                     | 230VAC / 115VAC<br>24VAC / 24VDC |
| Connector  | DIN 43650-B                      |
| Serviceable valve  | Yes                              |
| TEST feature   | Yes                              |
| Environmental protection                                   | IP65 (NEMA4)                     |
| Integrated mesh strainer                                   | Yes                              |
| Alarm  | Yes, LED indication only.        |
| For external alarm options please see the KAPTIV-CS range. |                                  |

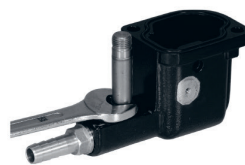


JORC's direct acting valve assembly, offering you reliability.

### Quick disassembling to service the drain – standard tools required.



1. Remove the electronic module



2. Remove the valve shaft



3. Direct access to the valve orifice

JORC is ISO 9001:2008 Certified



Information provided herewith is believed to be accurate and reliable. However, no responsibility is assumed for its use or for any infringement of patents or rights of others, which may result from its use. In addition, JORC reserves the right to revise information without notice and without incurring any obligation.